

**GODFREY-LEE PUBLIC SCHOOLS
PARENTAL INVOLVEMENT POLICY**

Godfrey-Lee Public Schools recognizes and values parents and families as children's first teachers and decision-makers in education. They believe that student learning is more likely to occur when there is an effective partnership between the school and the student's parents and family. Such a partnership between the home and school and greater involvement of parents in the education of their children generally result in higher academic achievement, improved student behavior, and reduced absenteeism.

The Superintendent will provide for a comprehensive plan to engage parents, families, and community members in a partnership in support of each student's academic achievement, the district's continuous improvement, and individual school improvement plans. The plan will be distributed to all parents and students through publication in the Student Handbook or other suitable means. The plan will provide for annual evaluation, with the involvement of parents and families, of the plan's effectiveness and identification of barriers to participation by parents and families. Evaluation findings will be used in the annual review of the Parent and Family Involvement policy and to improve the effectiveness of the district plan.

The goal is a school-home partnership that will help all children succeed. We thank you in advance for all of your help and assistance in working together with your child to help him/her succeed in school.

SCHOOL FAMILY COMPACT

Parents will be asked to sign a compact. The compact is an agreement between the parents and the school to help ensure each child's academic success. By signing the compact all agree they are going to work together to improve learning. Parents are involved in developing the compact. This compact is required by the Federal Title I guidelines.

If you have questions about general, state, or federal supplemental programs, contact your child's principal or:

Carol Lautenbach
Assistant Superintendent for Title I
616.243-0533 x2322
clautenbach@godfrey-lee.org

GODFREY-LEE PUBLIC SCHOOLS

1920 GODFREY AVENUE SW
WYOMING, MI 49509
PHONE: 616-243-0533 x2322
E-MAIL: CLAUTENBACH@GODFREY-LEE.ORG

TITLE I PROGRAMS OFFERED:

	Program	ECC	GEL	LMS	East Lee	Private Schools
1.	Literacy Coach	X	X			
2.	Interventionist	X	X			
3.	Math Support-Paraprofessionals			X	X	X
4.	Reading Support-Paraprofessionals	X	X	X		X
5.	Read180/System44		X	X	X	
6.	Supplementary Materials and Supplies	X	X	X	X	X
7.	Professional Development	X	X	X	X	X
8.	Summer Learning Programs	X	X	X		X

GODFREY-LEE PUBLIC SCHOOLS

**TITLE I:
FEDERAL
SUPPLEMENTAL
EDUCATIONAL
PROGRAM**



616-243-0533

WHAT IS A SUPPLEMENTAL EDUCATIONAL PROGRAM?

Title I is a program through which most school districts receive *federal* funding to provide supplemental instruction for students who qualify. These services are based on the academic needs of students. Students who qualify for academic support may be served in the core academic areas (Reading, Writing, Math, Science, and Social Studies). The support may occur during the day, after school, or in the summer.

Students in the Godfrey-Lee Public School District are assessed in a variety of ways throughout the school year. These formative, summative, and performance assessments provide the teachers with the data they need to be able to provide instruction to meet the specific needs of each child and to place students in appropriate supplemental intervention programs. The goal of the Title I program is to provide the instructional services the students need in order to increase student performance and academic achievement.

THE PURPOSE OF TITLE I IS TO:

- Help every child receive a high quality education.
- Build capacity for parent involvement.
- Provide professional development for building staff.
- Meet the requirements of the "No Child Left Behind" federal mandates.



Parents may request information regarding the professional qualifications of teachers and staff who work with their child.

ELIGIBILITY REQUIREMENTS

A variety of factors are used to determine eligibility, including but not limited to:

- Standardized tests (DIBELS, MEAP, etc.)
- Classroom-based assessments and performance
- Teacher recommendation

SCHOOL COMMUNICATION

- Newsletter
- Informative Flyers
- School/District/Teacher websites
- Report Cards
- Interim/Midterm reports
- Conferences
- Student Support
- Message Boards outside of each school
- Assignment Book/Planner/Agenda
- School/District Report Cards (AYP)

In accordance with federal law, programs supported by Title I funds must be designed and implemented in consultation with parents of the student being served. The Superintendent shall ensure that the Title I plan contains a written statement of guidelines which has been developed with, approved by, and distributed to parents of participating students. The Superintendent shall also assure that each Title I participating school develops a specific plan, with parental involvement.

An annual Parent Survey is given to all of our Title I families for feedback and suggestions. Please complete the survey when it is distributed and return it to the school. Your input will help us create a quality program.

DID YOU KNOW ...

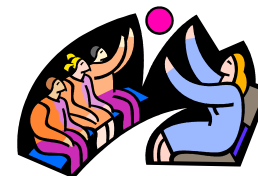
Two (2) elementary schools in the Godfrey-Lee School District have Title I *School-wide Programs*: Early Childhood Center (ECC) and Godfrey Elementary School; two (2) schools have *Targeted Programs*: Lee Middle School and East Lee Campus.

Thanks to Grandville Public Schools for sharing their supplemental program brochure with us, to help us develop this informational tool for you.

PARENTS ARE AN IMPORTANT PART OF OUR TEAM!

Parents influence their children's education more than any teacher or school. Parent involvement can boost children's achievement. By taking an active role in our school, parents show their children that they are valued and that education is important. Children learn that parents and the school are a team, working together to help them succeed. Communication in written and spoken form is provided to all in a language and format s/he can understand.

HOW PARENTS CAN BE INVOLVED ...



- Read to your child and/or listen to your child read daily.
- Attend Open House/Orientation/Annual Title I Meeting.
- Attend Parent/Teacher Conferences.
- Participate in field trips, class activities, projects, and our volunteer program.
- Ask questions about things you wonder and provide input to improve our program.
- Share your skills, hobbies, and interests with our school community.
- Talk to your child every day about school success.
- Participate in workshops/informational meetings.
- Join any of our school-wide committees.

PARENT/TEACHER CONFERENCES

Conferences are one of the most important ways parents and teachers work together as a team. Conferences are a helpful way for parents to share information about their child's special interests. It is also a good time for discussing the child's academic progress, for gaining ideas on how parents can help their children at home, and for supporting the child as s/he presents the work s/he has done. A translator is available upon request.



GODFREY-LEE PUBLIC SCHOOLS

1920 GODFREY AVENUE SW
WYOMING, MI 49509
PHONE: 616-243-0533 x2322